

GBF WiFi IP Indoor Monitor MR930

User Manual



1

Install app "doordeer" before setup an indoor monitor

in APP store (iPhone or iPad) or google play (Android mobile phone)

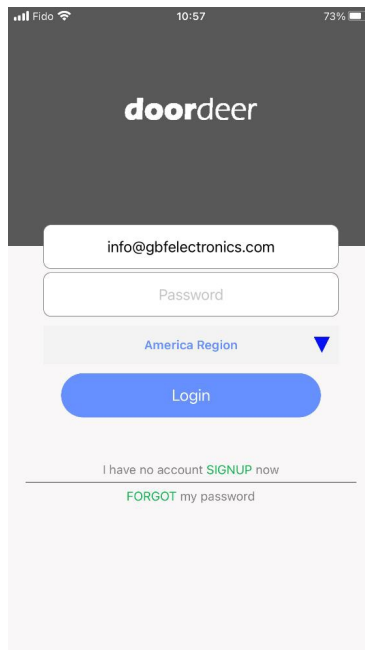


2

Installation and Sign up user account

After installation , you can sign up an user account.

Choose the nearby service region for better user experience.

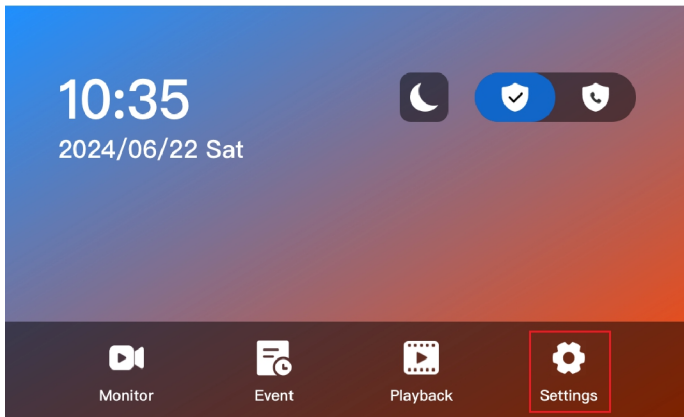


3

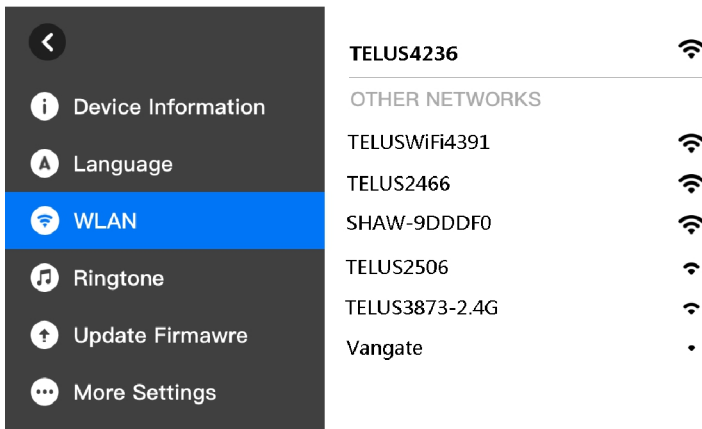
Add your first indoor monitor

Indoor monitor support both WIFI and RJ45 cable network connection.

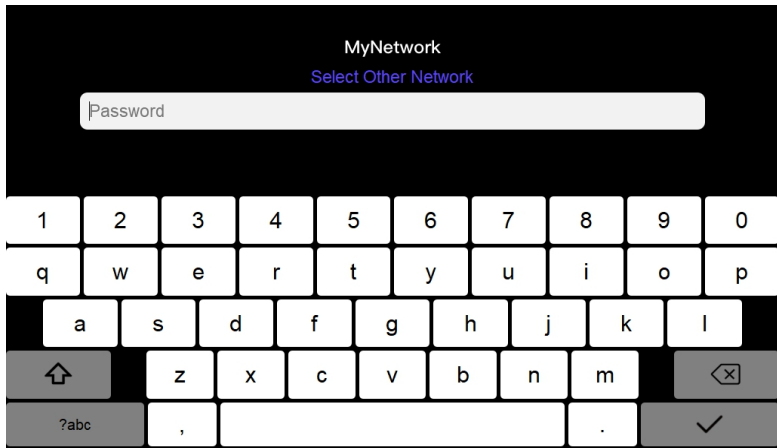
- ◆ If the device use RJ45 cable connection, make sure router and switch support DHCP and **turn on your mobile phone WIFI setting and choose the same network as the indoor monitor connected.** When click "add device" , APP will find the indoor monitor and you can add it into device list.
- ◆ If the indoor monitor uses WiFi, Please go to indoor monitor wifi setting page (Settings – wifi setup), It is ready for setup when the WiFi configuration page appears (see the following image).



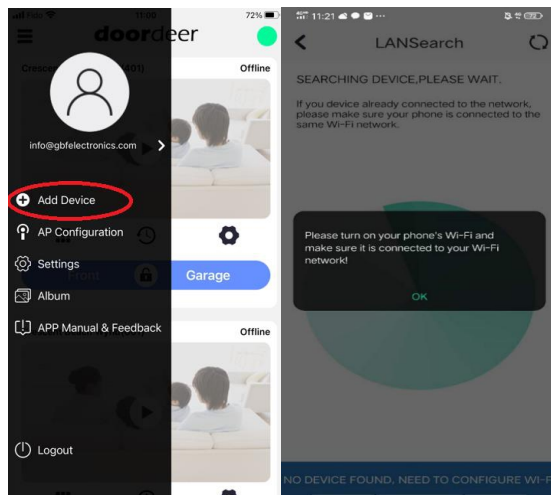
Then you will find Setting manual and click the WLAN setting.



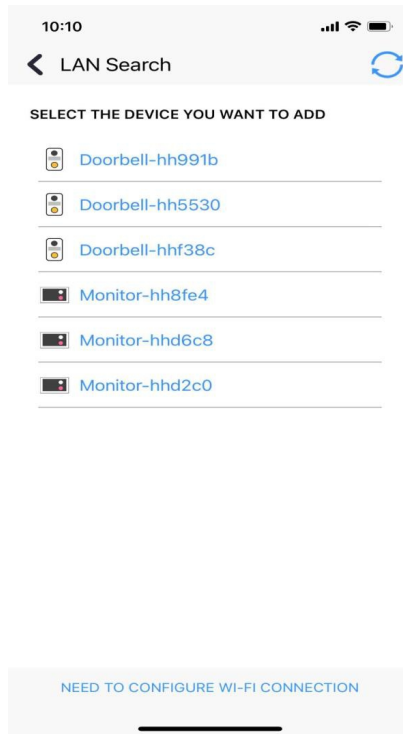
Find your wifi name and input the password of the wifi and then connect that.



Open your Doordeer app and switch to left slider bar, click "Add Device" add your indoor monitor, see the following steps:



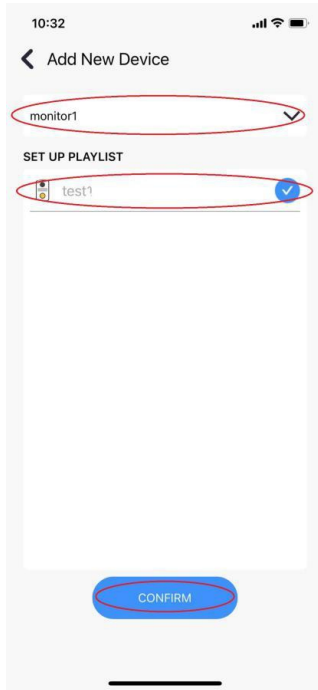
3.1 The Doordeer APP will use “LAN Search” to find any online indoor monitor at the same network. You will see Monitor-hhxxxx in your new device list, then click that and add into your device list.



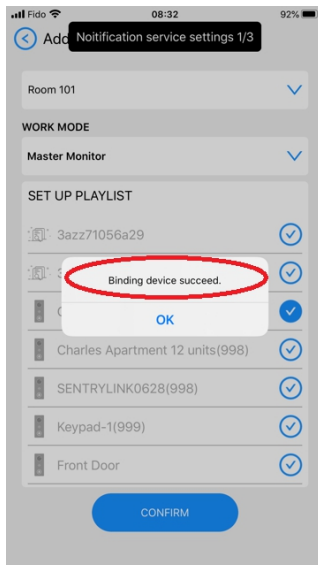
3.2 Naming indoor monitor:

You could add the new name for your indoor monitor first.

In SET UP PLAYLIST, you need to select which outdoor station you would like this indoor monitor to connect, check the box for that outdoor station to confirm your selection. Then click confirm.

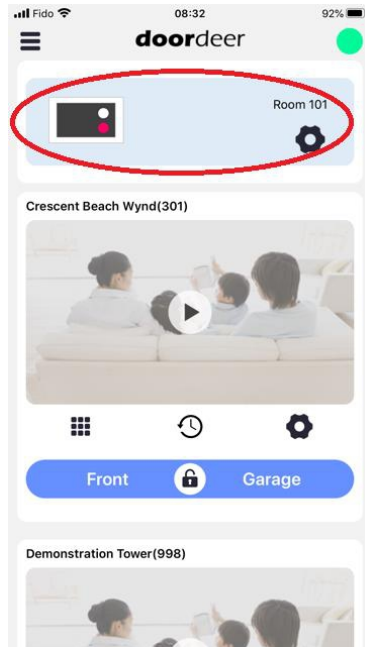


3.3 After you select your outdoor station for this new indoor monitor, the APP will show you "Binding device succeed". Then press ok to continue.



3.4 Indoor monitor ICON in Doordeer APP:

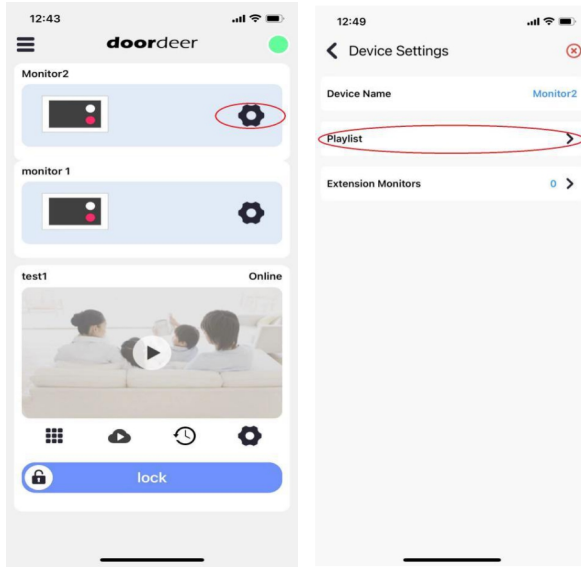
After the indoor monitor is successfully added into your system, you will see this indoor monitor ICON in Doordeer APP. You could press Setting icon to change this indoor monitor setting such as rename, select second outdoor station etc..



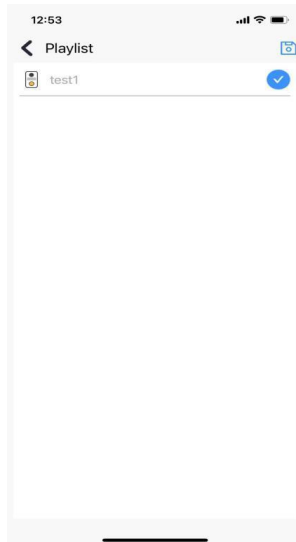
4

Choose the doorbell(s) you want to bind to indoor monitor

Click the “Setting” button of Monitor, and then click Playlist.



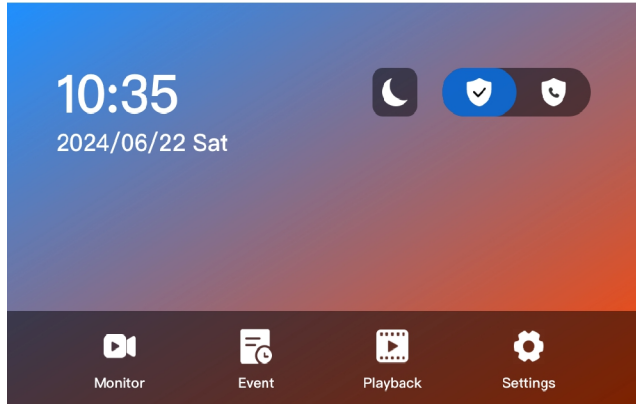
During adding indoor monitor, you can choose the different outdoor stations or multiple door stations in device list to bind the indoor monitor and make sure check the device you want to add.



5

Indoor monitor UI introduction

After added in app , indoor monitor will automatically reboot and update the system in 10 minutes.

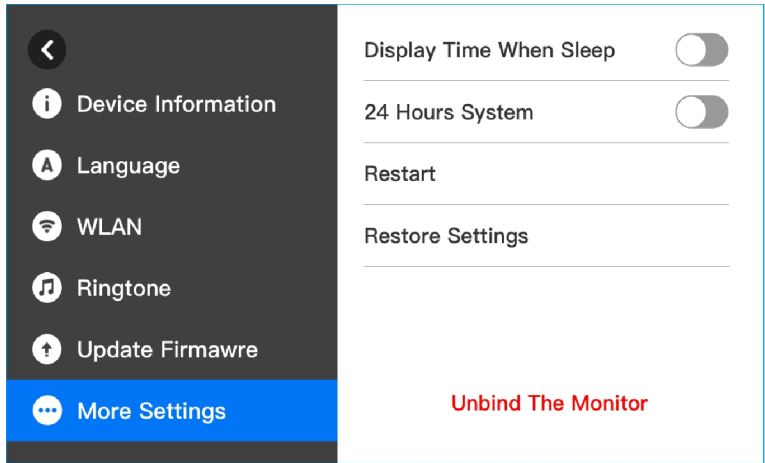


Monitor	Live view from Indoor monitor
Event	All activities record checking from Cloud or SD card
Playback	Video playbacks for log file
Settings	Switch to WIFI setup mode/Ringtone selection or firmware update etc.
Notification Settings	Three Notification selections: <ol style="list-style-type: none"> 1. Silent mode 2. All Notification mode (motion notification and call-in notification) 3. Only call notification mode

6

Basic Settings

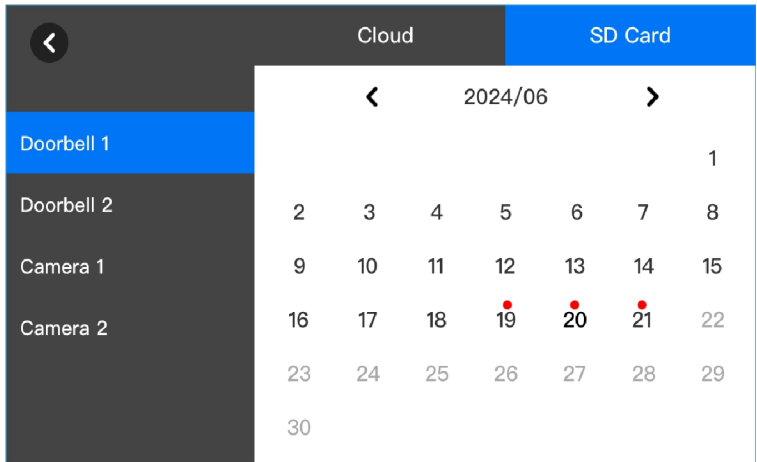
You can setup ringtones and switch to WIFI setup mode. Setup 24 hours mode



7

Cloud & SD card record playback

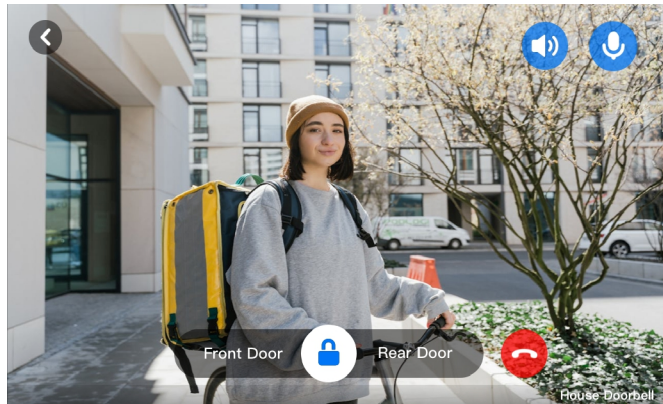
Click “moments button” , you can playback the activities in cloud or SD card.



8

Live monitor and unlocking

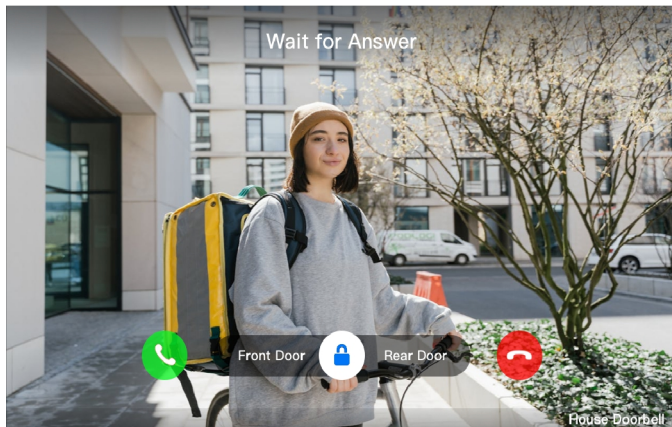
Doordeer indoor monitor supports up to 4 channels live video simultaneously. To see more detail you can enlarge it by single-click the small window.



9

Calling, talking and unlocking

When a visitor presses your room number or your name in outdoor station, indoor monitor will show the video of door station camera and it will send ringing notification as well. You can answer the visitor and talk, unlock from this indoor monitor.

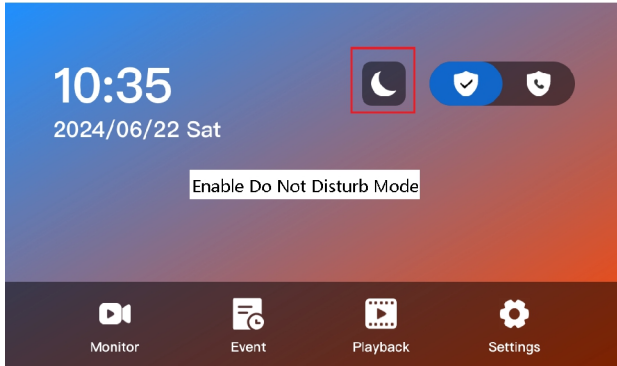


10

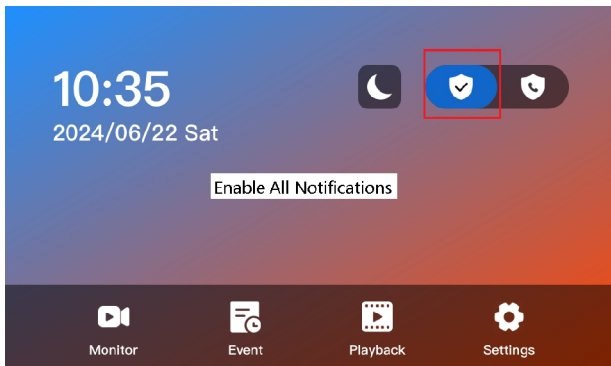
Notification Settings

There are three different Notification Settings:

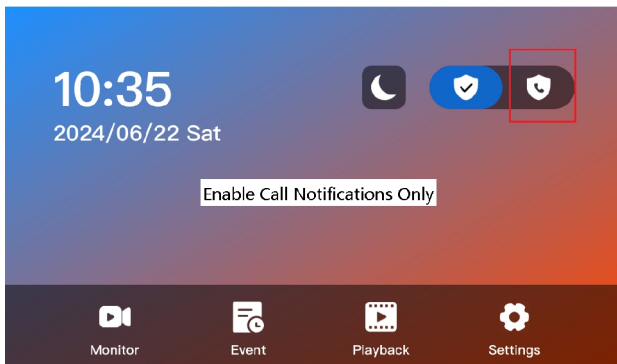
1. Silent Mode (Do not disturb Mode).



2. Enable All Notification Mode (Motion Detection alert and call-in Notification alert)



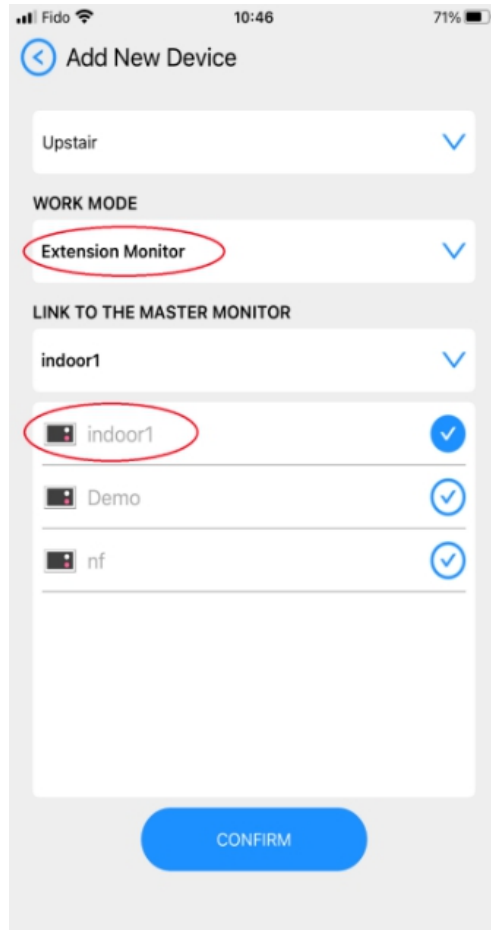
3. Only Call Notification Mode.



11

Adding Second Indoor Monitor

Adding the second indoor monitor in one family house is the same as adding the first one by your smart phone. See the step 3.1-3.3. In 3.3, Naming the indoor monitor, choose the Work Mode to Extension Monitor. And Link this second monitor to your first indoor monitor (Master monitor). Same setup for third or fourth indoor monitor in one house.



Tips

A before add your first indoor monitor

You need at least one door station added in your doordeer app account . Then you can bind one or multiple door stations with your indoor monitor or multiple indoor monitors.

B During adding this indoor monitor to your smart phone

Please make sure to turn off your smart phone Bluetooth and Cellular Data, and connect your smart phone to your local wifi connection if you try to use wifi connection with your indoor monitor.

C Can indoor monitor work with LAN which do not connect to internet

Yes. When indoor monitor and door station are in the same local network (LAN), they can work together. Your mobile phone will not get a push notification when LAN does not connect internet.

D Is there any reset button on the indoor monitor?

Yes, you could reset this indoor monitor to factory default setting by pressing the reset button on the back of the indoor monitor. You will hear one "dingdong" sound after pressing and holding the reset button.



GBF Customer Support Contact:

Phone: 1-604-278 6896 or 1-604-285 8721

Email: info@gbfelectronics.com

URL: www.gbfelectronics.com