

GBF WIFI SKYBOX (MR263C4)

User Manual



1

Install app "doordeer" before setup an indoor monitor

"Doordeer" can be downloaded from APP store (iPhone or iPad) or google play (Android mobile phone)

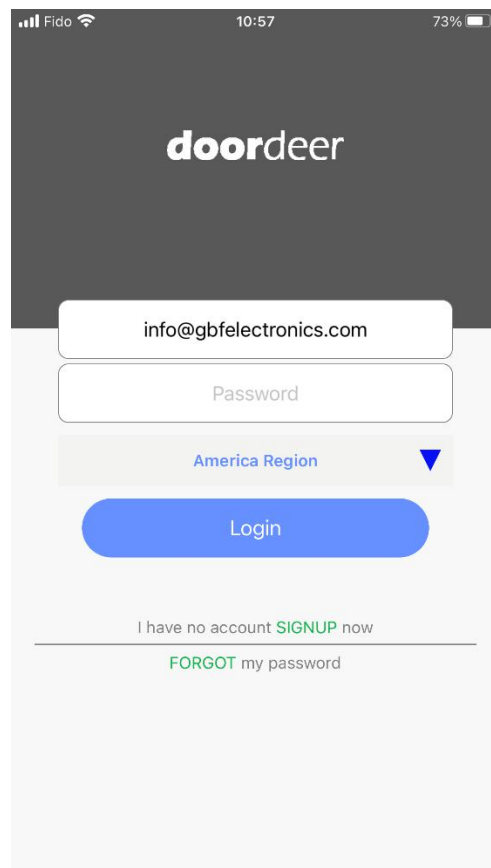


2

Installation and Sign up user account

After installation, You can sign up an user account.

[Choose the nearby service region for better user experience.](#)



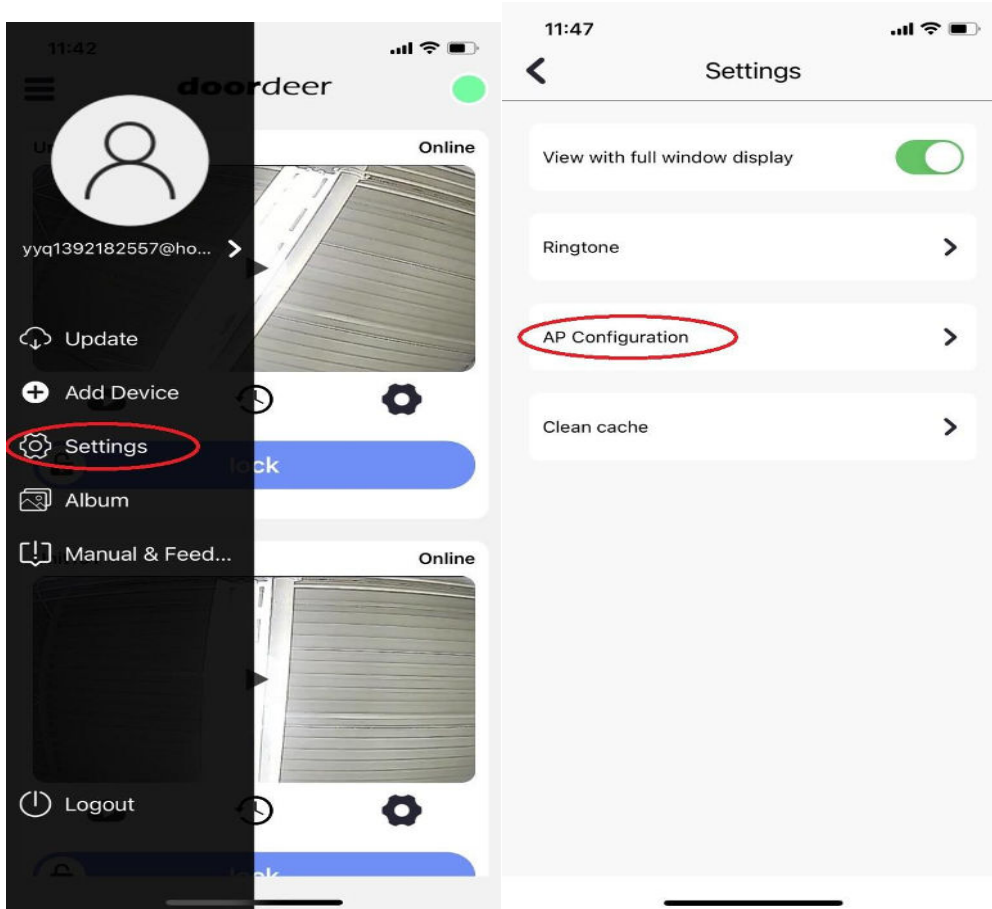
3

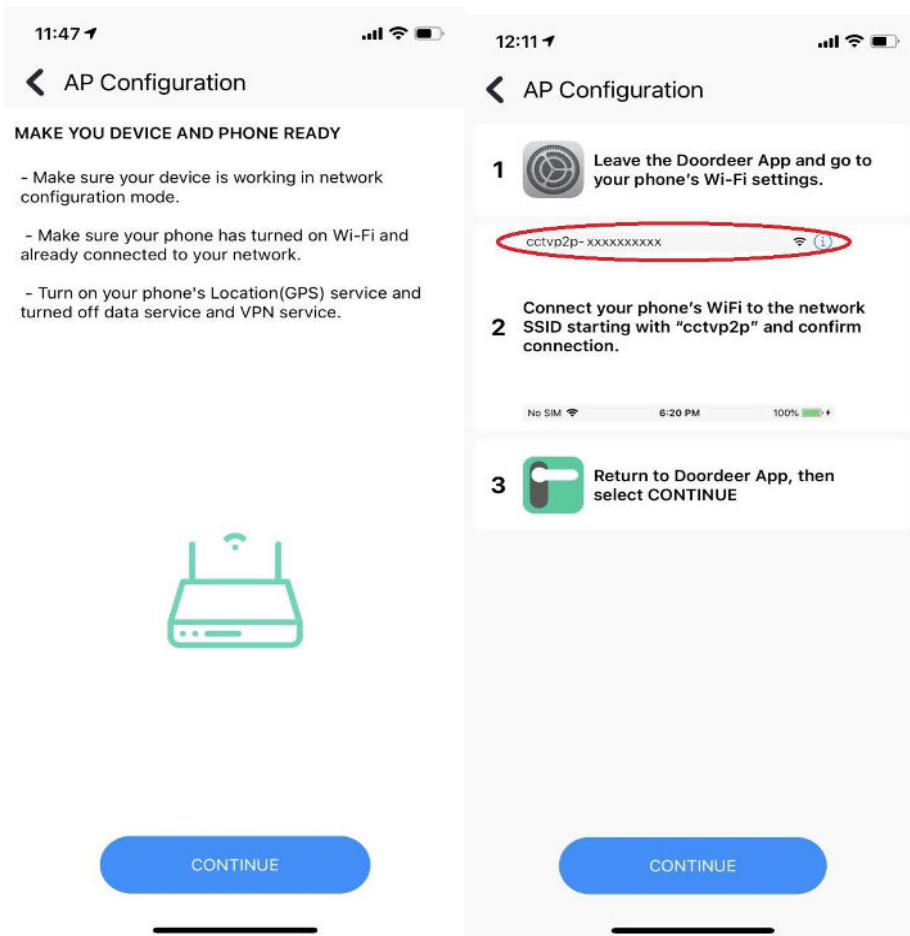
Add Skybox into APP

GBF SKYBOX support both WIFI and RJ45 cable network connection.

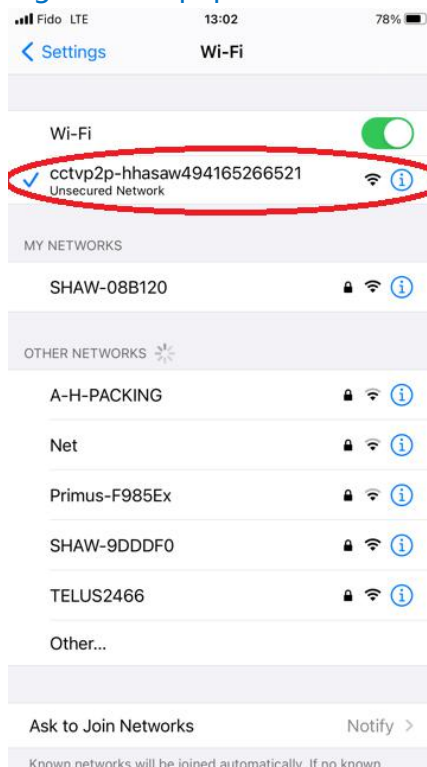
- ◆ If the device use RJ45 cable connection, make sure router and switch support DHCP and **turn on your mobile phone WIFI setting and choose the same network as the SKYBOX connected.** When click “add device” , APP will find the SKYBOX and you can add it into device list.
- ◆ If the SKYBOX uses WiFi connection, please make sure to turn off your cellphone cellular data and connect your mobile phone to your local 2.4G wifi which is the same network that the SKYBOX will connect to. Power on the skybox, and press and hold the RESET button for 10 seconds until you hear one long beep sound to reset your skybox to the factory default setting first.

Open Doordeer app and switch to left slider bar, click “Settings” and then click “AP Configuration” to add your SKYBOX, see the following steps:



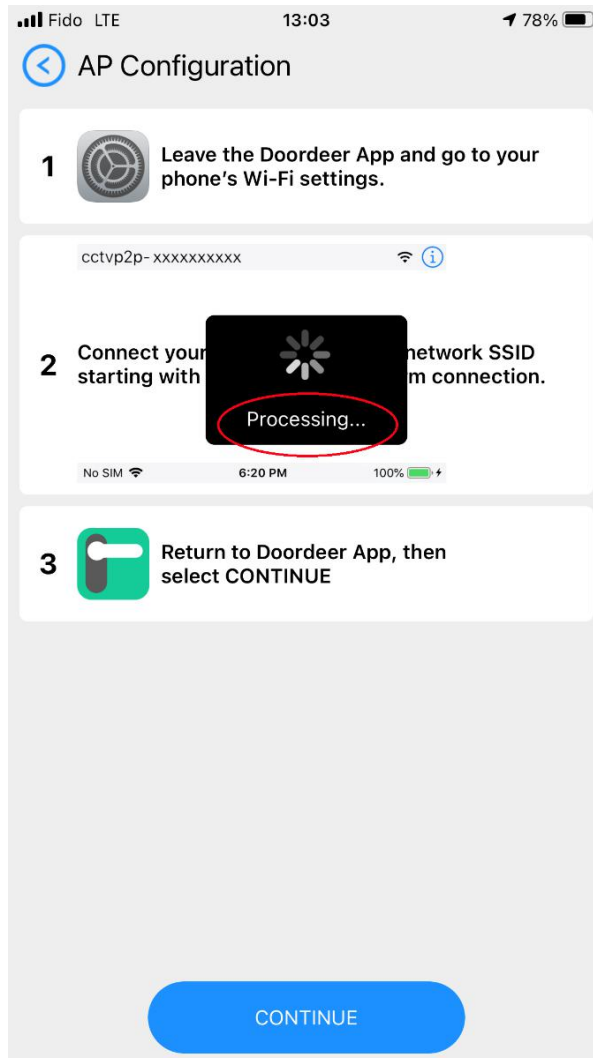


3.1 Go to your phone wifi setting and connect your smart phone to this SKYBOX hotspot which is starting with cctvp2p-hhasawxxxxxx.



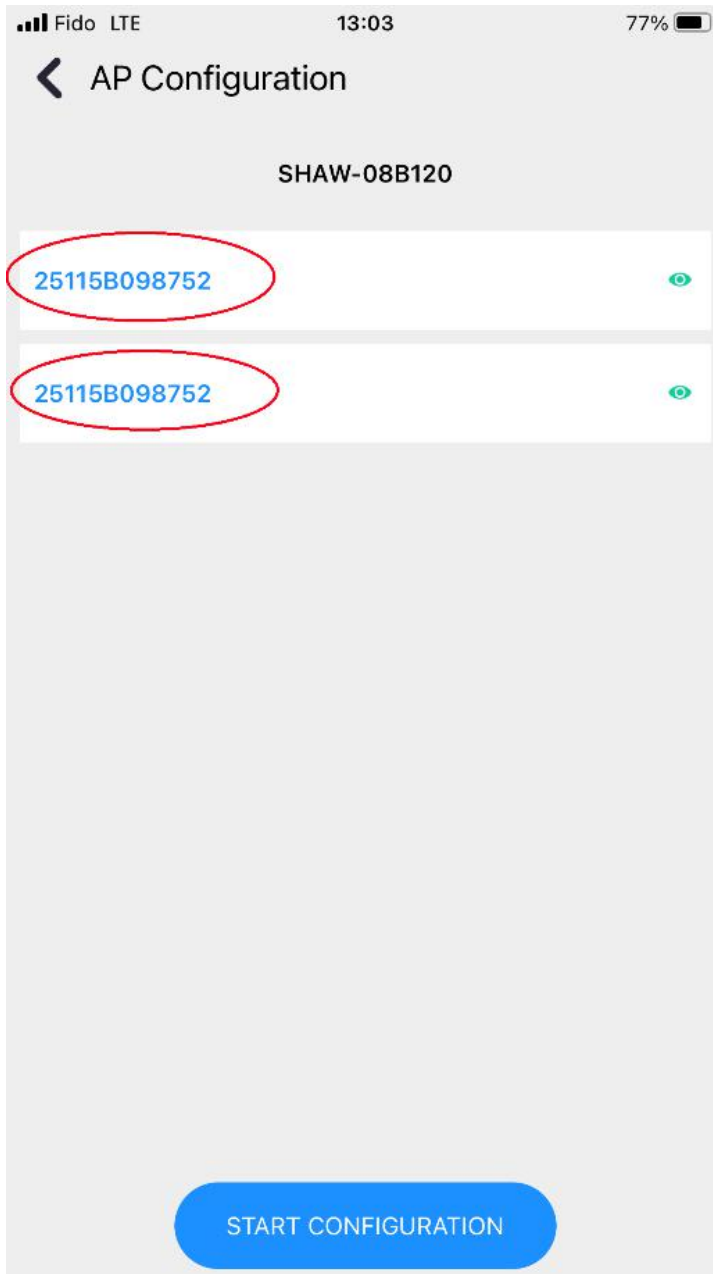
3.2 Continue AP configuration:

Then go back to Doordeer APP, the AP configuration will start automatically.

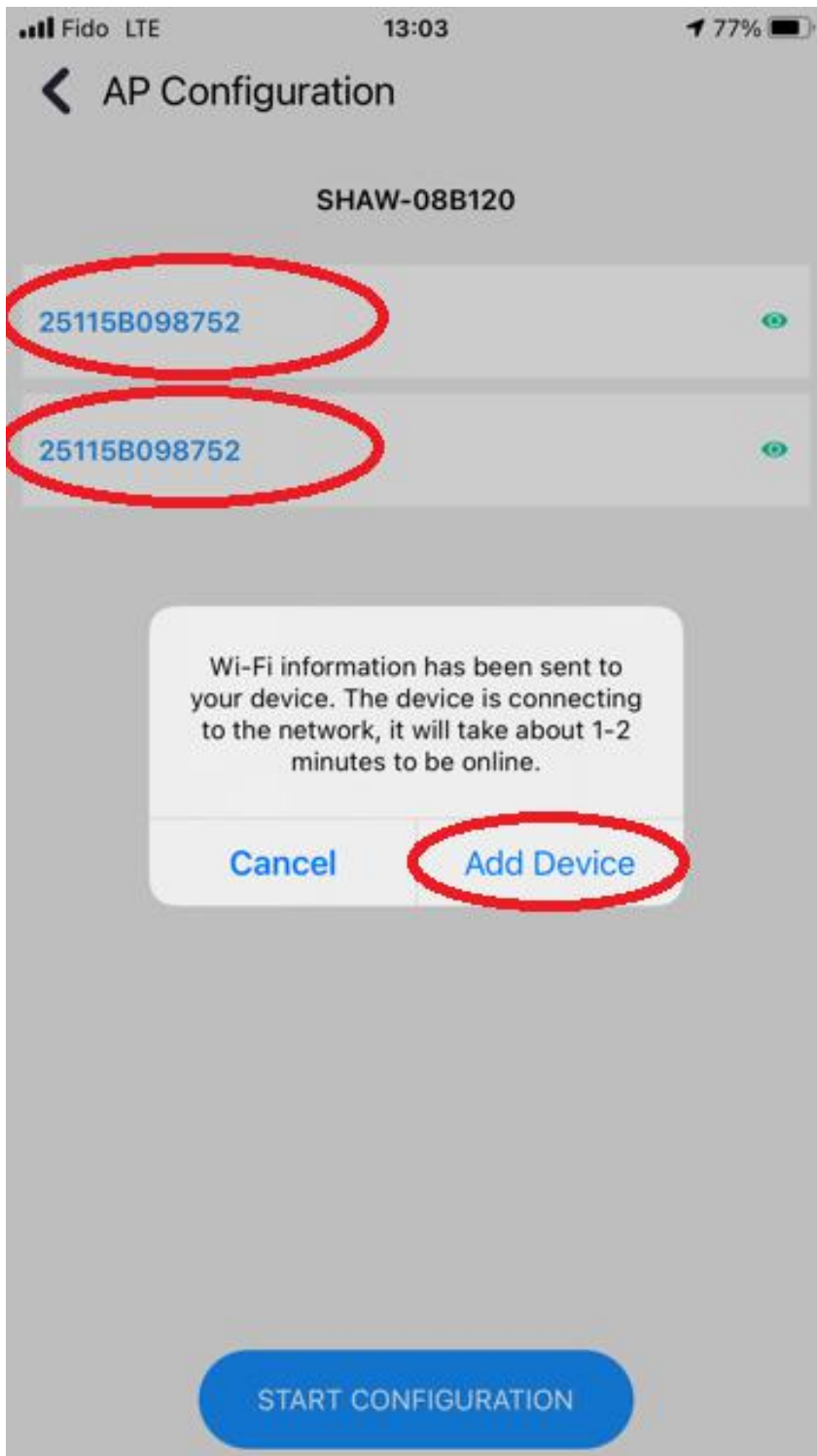


3.3 Check your wifi name and enter your wifi password:

The APP will automatically search your local 2.4G wifi and find your wifi name, please double check that is the correct wifi for this SKYBOX to connect or not. Then input your local 2.4G wifi password into the blank space twice, then press "START CONFIGURATION" .

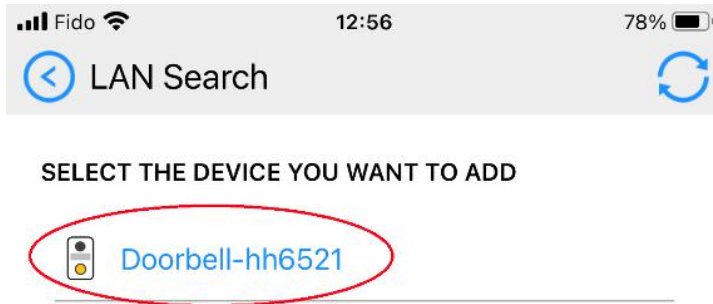


3.4 Start AP configuration for the SKYBOX, and the following message will be shown on the APP screen, then click "Add Device"



3.5 Find the SKYBOX and add the SKYBOX:

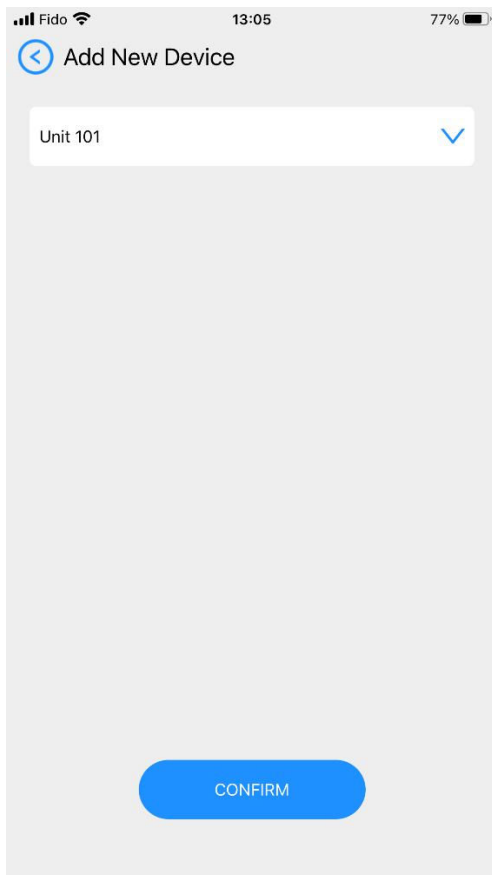
The APP will find the SKYBOX and the new device will show in the window "SELECT THE DEVICE YOU WANT TO ADD" . Then click this Doorbell-hhxxxx, it will lead to your next page for naming the SKYBOX.



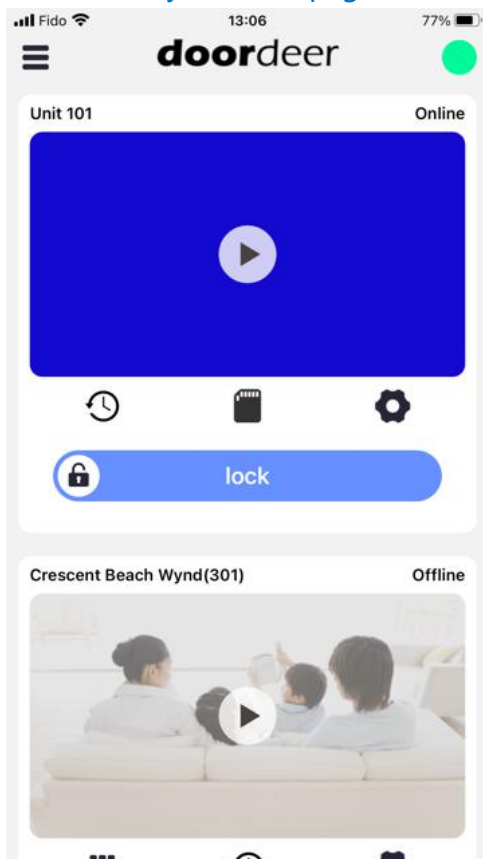
NEED TO CONFIGURE WI-FI CONNECTION

3.7 Naming SKYBOX:

You could add the new name for the SKYBOX first such as Unit 101 etc.. Then click "CONFIRM" .

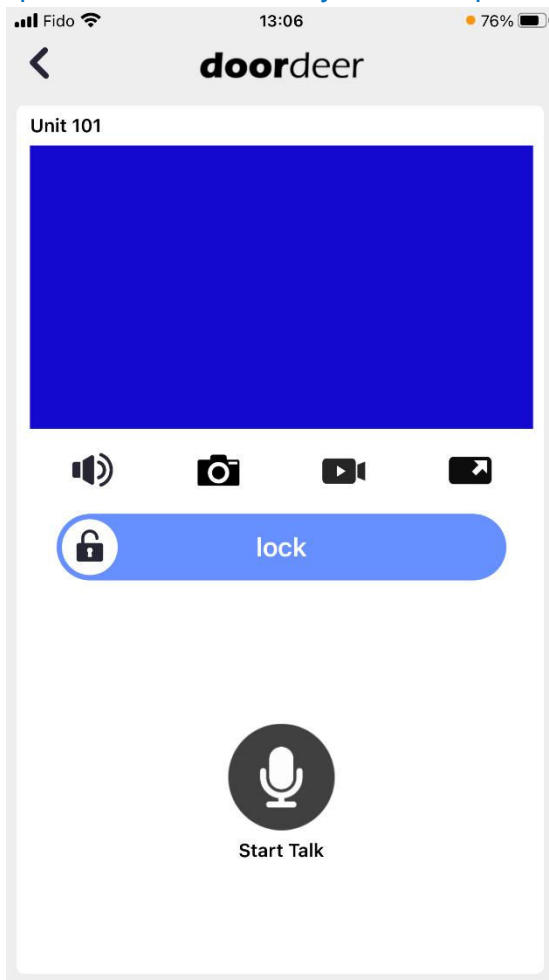


3.2 After you successfully add this new SKYBOX into your APP, you will see this SKYBOX on your front page of the APP.



3.3 Access SKYBOX from Doordeer APP:

After the SKYBOX is successfully added into your APP, you will see your room in Doordeer APP. You could access your outdoor station camera and watch, hear, speak and unlock from your smart phone.



Tips

A During adding the SKYBOX to your smart phone

Please make sure to turn off your smart phone Cellular Data, and connect your smart phone to your local 2.4G wifi connection if you try to use wifi connection with your SKYBOX.

Before you configure a skybox, please make sure to RESET the skybox to the factory default setting by Press and Hold the RESET button on the back of the skybox for 10 seconds until you hear one long beep sound.



GBF Customer Support Contact:

Phone: 1-604-278 6896 or 1-604-285 8721

Email: info@gbfelectronics.com

URL: www.gbfelectronics.com