

Holes in
the wall

GBF

Plastic
Wall Plug

Four Wire Intercom System

User Manual

Screws

Allen wrench



WELCOME

Congratulations on purchasing the GBF Smart Four Wire Intercom System. Our factory engineers were the first to enable multiple security cameras being monitored through a smart mobile device and they have used that expertise to bring you a full-featured Smart Four Wire Intercom System which allows you to monitor and interact with visitors at your door, wherever your mobile device has a Wi-Fi or data connection. Please read these instructions carefully and follow all the required steps during setup to ensure your enjoyment of a fully functional Smart System in minutes. You may connect the System through your LAN (Ethernet Cable) or through a Wireless (Wi-Fi) connection. As any video and audio streaming device, wired connections are preferred over Wi-Fi, but the convenience of not requiring wires from your Outdoor Station's location to your router may be the determining factor in your installation.

For customer support or any inquiries, please visit our web site at www.gbfelectronics.com or contact us at info@gbfelectronics.com

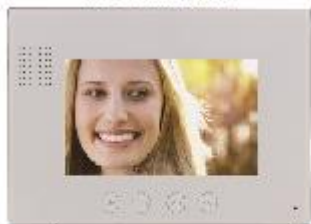
Inside the Box

GBF Smart Four Wire Intercom System:

- (1) GBF PL270C4
- (1) Rain cover
- (1) GBF indoor monitor
- (1) GBF 3rd Gen SKYBOX MR263C4
- (2) Power Supply 12 V_{DC}
- (4) Screws with Anchors
- (1) Allen Key
- (1) Hex-Head Screws
- (1) Wiring Harness Accessories
- (1) User Manual



Indoor Monitor

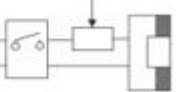


Skybox



Outdoor Station

Power supply for lock



Door lock

1. Installation

* For your convenience, perform the initial configuration of the Outdoor Station connecting it to a power supply nearby your home internet router. From this way, it is possible to check the full operational function before place the parts of the product.

- **Placing the outdoor station:** Place the outdoor station beside your gate, considering field of vision, shadows and background light (for the camera). You should also consider proximity the ability to wire for additional accessories. The recommended mount height is 60" (150cm) above the surface where the caller is standing on. At the chosen place must have at least a 1 ¼" hole on the wall to allow the wired connection.

- **Placing the indoor monitor:** Place the indoor monitor inside the building, in a convenient place for you. Remember about the necessary power supply.

- **Placing the Skybox:** Place the Skybox in a local with good wi-fi connection with your router or in a local with access of a ethernet cable from your router. Remember about the necessary power supply. It is strongly recommended to place the skybox nearby indoor monitor, to simplify the wired connection.

- **Connecting the system:** Using the four wires connectors (come jointly the kit), connect the outdoor station with the indoor monitor, and parallel to it (deriving from the same four wires) connect to the skybox. Notice that there is only one 4 pin connector inside the outdoor station and two behind indoor monitor and skybox, the main outdoor station must be connected at the CN1 port of indoor monitor and skybox (in case of two outdoor stations, the secondary one will must be connected to CN2). Notice that the connectors already come prepared to be extended, only make sure to match the wires post extension by the color code.

- **Connecting an electric lock:** The outdoor station possesses a SPDT relay that allows the use of an electric lock with a push-button to release the gate. Use the red and black wires from the 5-pins connector (CN3 behind the outdoor station) to connect a push-bottom. Use the green and blue wires for normal opened

contact, or blue and brown for the normal closed contact, to connect the electric lock.

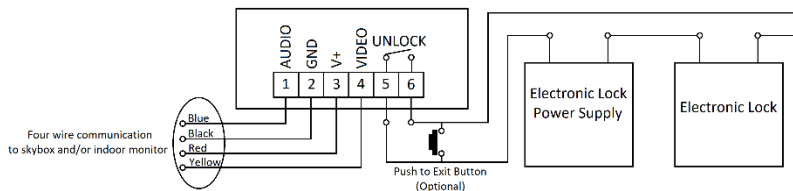
- **Powering the system:** Connect the power supplies to the 2-pins connectors on each system's part (indoor monitor and skybox).

- **Assembling the outdoor station:** Gently place the excess wire inside the hole behind the outdoor station. Assemble the outdoor station inside the rain cover mount, placing the top first. Then fix the two screws on the bottom of the rain cover mount using the Allen key.

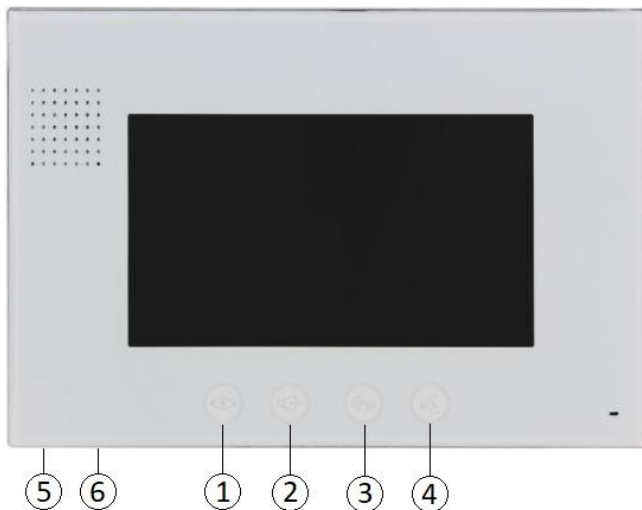
Notes:

- The system allows up 4 indoor monitors and 2 outdoor stations (or 1 outdoor station and an extra camera), remembering that each one needs to be powered separately.
- Each indoor monitor can monitor two outdoor stations or cameras.
- The maximum distance between the outdoor station and the indoor monitor could be over 100m .

**Wiring Diagram for Normally Opened Lock
(e.g. Electronic Door Striker or Gate Opener)**



3. Operating the Indoor Monitor



①		Monitor	④		Talk
②		Transfer	⑤		Ringer volume
③		Unlock	⑥		Talk volume

Note: In case of the system has more than one Indoor Monitor: the connector J2 must be connected only in the farthest Indoor Monitor (in relation to the Outdoor Station) and disconnected in the others; and the connector J1 must be connected in the Indoor Monitor closest to the Outdoor Station and disconnected in the others.

- Receiving a Call from the Outdoor Station:

1. When a visitor presses the “Bell” button on the outdoor station, your indoor monitor(s) will turn on the screen with the outdoor station image and will ring.
2. Press the ‘Talk’ button to answer the call and start a conversation with the visitor.
3. Press the ‘Talk’ button to hang up.

- Monitoring the Outdoor Station(s):

1. At any time, press the ‘Monitor’ button to watch the image from the outdoor station (once for the outdoor station 1 and twice for the outdoor station 2).
 2. Press the ‘Monitor’ button once more to turn off the screen.
- It is possible to start a conversation from the monitoring mode only pressing the ‘Talk’ button, and pressing again to hang up.

- Unlocking the electronic lock:

During a conversation, monitoring mode or receiving a call, press the ‘Unlock’ button to activate the unlock contact relative to that outdoor station.

- Transferring an Outdoor Station’s call:

1. During a conversation with the outdoor station, press the ‘transfer’ button to transfer the call.
2. The ControlCam App will ring, as well as the others monitors in the system. All of them will be enabled to answer the call.

- Calling from the indoor monitor:

While in standby mode, press 'Transfer' button to call others indoor monitor or call the ControlCam app (with no video).

- Managing images:

When the indoor monitor receives a call, it saves automatically a screenshot. Follow the steps to access and delete these files.

1. While in standby mode, press 'Talk' button to access the storage of images.
2. Scroll through the images using 'Unlock' and 'Transfer' buttons.
3. Delete an image pressing 'Monitor' button and pressing again to confirm.
4. Exit this mode pressing the 'Talk' button.

If you have an SD card inserted in the indoor monitor, the screenshots taken will be saved on the card.

- Recording videos:

During a call or monitoring mode, it is possible to record a video from the outdoor station image, pressing the 'Talk' button for 3 seconds, selecting 'video'.

1. Press the 'Talk' button for 3 seconds to entry in the record mode.
2. Select 'video' pressing the 'Talk' button to scroll over the menu, then press the 'Unlock' button to record. You can stop recording by pressing 'Talk' or 'Monitor' buttons.
3. While in standby mode, press 'Talk' button for three seconds to access the storage of videos.
4. Select 'play' pressing the 'Talk' button to scroll over the menu, then press the 'Unlock' button to watch the video.
5. Exit this mode pressing the 'Monitor' button.

In case of using SD card, it is possible to remove that and watch the videos using a computer with SD card slot and a player able to play '.AVI' files.

If you have an SD card inserted (the system asks you to format when you insert it), the indoor monitor will record a short video always you receive a call from the outdoor station.

- Adjusting ringer and talk volumes:

At any time, use the volume scrolls to adjust the ringer and talk volumes to the desired level.

- Adjusting indoor monitor's screen settings:

1. During any mode, press 'Talk' button and hold for three seconds to access the configuration menu.
2. Pressing the 'Talk' button, scroll over the 'Brightness', 'Contrast' and 'Chroma' options.
3. Use the 'Transfer' button to increase and the 'Unlock' button to decrease the options levels.
4. Exit the menu pressing the 'Monitor' button.

- Adjusting date and time:

1. During any mode, press 'Talk' button and hold for three seconds to access the configuration menu.
2. Pressing the 'Talk' button, scroll over the 'Date' and 'Time' options.
3. Press the 'Unlock' button to access the option.
4. Use the 'Talk' button to change among 'Year', 'Month' and 'Day' or 'Hours', 'Minutes' and 'Seconds'.
5. Use the 'Transfer' button to increase and the 'Unlock' button to decrease the options.

6. Press the 'Talk' button until pass through all the options to go back to the main menu.
7. Exit the menu pressing the 'Monitor' button.

- Clearing the indoor monitor's storage:

1. During any mode, press 'Talk' button and hold for three seconds to access the configuration menu.
2. Pressing the 'Talk' button, scroll over the menu until the 'Delete All' option.
3. Press the 'Unlock' button to access the option.
4. Use the 'Unlock' and 'Transfer' buttons to select between 'Video' and 'Photo' options.
5. Press the 'Talk' button to confirm and clear all the selected files.
6. At the end of the process, the configuration menu will be quitted automatically.



GBF ELECTRONICS INC.

#110A, 12811 Clarke Place, Richmond,
BC, V6V 2H9, Canada

Tel: 604-278-6896

Fax: 604-278-6895

E-mail: info@gbfelectronics.com